



The 6th Annual European Semantic Web Conference ESWC2009

31st May – 4th June 2009 | Heraklion, Greece



www.eswc2009.org

Brought to you by:



STI · INTERNATIONAL



ORGANIZING COMMITTEE

General chair

Fabio Ciravegna | University of Sheffield (UK)

Program Chairs

Lora Aroyo | VU University Amsterdam (NL)

Paolo Traverso | FBK, Center for Information
Technology IRST (IT)

Tutorial Chairs

Philippe Cudré-Mauroux | MIT (US)

Chiara Ghidini, Fondazione Bruno Kessler | (IT)

Workshop Chairs

Jérôme Euzenat | INRIA Rhone-Alpes (FR)

Valentina Presutti | STLab ISTC-CNR (IT)

Demo/Poster Chairs

Philip Cimiano | TU Delft (NL)

Elena Simperl | STI Innsbruck (AT)

Semantic Web in Use Chairs

Eero Hyvönen | Helsinki University of Technology (FI)

Tom Heath | Talis (UK)

Semantic Web Technologies Co-ordinator

Michael Hausenblas | DERI (IR)

Harith Alani | University of Southampton (UK)

Proceedings Chair

Eyal Oren | VU University Amsterdam (NL)

Sponsorship Chair

Pascal Hitzler | AIFB - University of Karlsruhe (DE)

Panel Chair

Fausto Giunchiglia | University of Trento (IT)

PhD Symposium

Riichiro Mizoguchi | Osaka University (JP)

Marta Sabou | Open Univerisity (UK)

Treasurer

Alexander Wahler | STI International (AT)

Local Organiser and Conference Administrator

Lejla IbralicHalilovic | STI International (AT)

Mick Kerrigan | STI Innsbruck (AT)

Webmaster and Publicity

Charlotte Finkbeiner | STI International (AT)

TABLE OF CONTENT



Introduction	4
Keynotes	5
Research Papers	10
In-Use Track Papers	17
Demonstrations	18
Tutorials	21
Workshops	22
Conference Events	23
EU and Sponsoring Events	24
Sponsors	25
Conference Venue	30



INTRODUCTION

Dear Participants,

It is a great pleasure to welcome you to the 6th Annual European Semantic Web Conference in Heraklion, Greece. ESWC is the reference conference for the European Semantic Web community and sees the participation of many international researchers. It is a great environment to discuss recent results and developments, start up discussions and set up plans for new activities and projects. This year it is a pleasure to be back in Crete, with its beautiful surroundings and millenary history, which I am sure will inspire us all.

ESWC 2009 hosts an exciting scientific program together with a number of interesting side events. The days before the main conference include the PhD Symposium, tutorials and workshops; featuring a series of three full day/half day tutorials and seven full day workshops and one half day. The main conference includes a number of keynote speakers from Jim Hendler, Matthias Wagner, Alan Smeaton and Craig Knoblock, presentations of submitted papers, panels, poster presentations, demonstrations and lightning talks.

This years conference would not have been possible without the talent, enthusiasm, tireless effort and hard work of the organising committee which includes the program co-chairs: Lora Aroyo and Paolo Traverso; the Tutorial Chairs: Philippe Cudré-Mauroux and Chiara Ghidini; the Workshop Chairs: Jérôme Euzenat and Valentina Presutti; the Demo/ Poster Chairs: Philip Cimiano, and Elena Simperl; the Semantic Web in Use Chairs: Eero Hyvönen and Tom Heath; the Semantic Web Technologies Co-ordinators: Michael Hausenblas and Harith Alani; the Proceedings Chair: Eyal Oren, the Sponsorship Chair: Pascal Hitzler; the Panel Chair: Fausto Giunchiglia; and the PhD Symposium chairs: Riichiro Mizoguchi and Marta Sabou.

My thanks also include STI's Alexander Wahler whose team of Lejla Ibralic Halilovic and Charlotte Finkbeiner organised the event locally, set up the web site, local arrangements and handled the logistics and financial aspects of the conference. The committees thanks go along with my own to all the program vice chairs and members, who are an integral part to ensuring the success of the conference.

A large thank you goes out to all the sponsors of this years event for providing financial support in these tough economic times, without this support ESWC 2009 would not have been possible. My personal thank goes to Laura Smith from the University of Sheffield who provided everyday support for the general chair, by organising meetings and teleconferences, taking minutes and - especially - reminding me of the upcoming deadlines.

And finally my thanks go to you, to the participants as speakers, presenters and audience, who with your enthusiasm will make this conference a success.

Fabio Ciravegna



Tuesday, 2nd June • 09:00-10:30 | Conference Hall 1

Keys, Money and Mobile Phone

Dr. Matthias Wagner | NTT DOCOMO (DE)

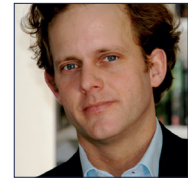
Session Chair: Lora Aroyo

Across cultures, genders and generations, the mobile phone has become one of the most essential objects in people's everyday life. In this talk, we will go through evidence on how, next to money and keys, the mobile phone is in fact the thing to be carried around by almost everybody, nearly all the time. By looking at the demands and needs of today's mobile users, we then discuss how Semantic technologies can add value to the phone as well as to mobile services.

In the presentation, we will walk through selected projects at DOCOMO Euro-Labs where we advocate that the success of future mobile services will largely depend on their ability to maximize value in varying context. Such „Contextual Intelligence“ in devices, mobile applications and service platforms will be needed to manage different mobile terminals, personalize content and services or to narrow down possibly very large sets of applicable services in a given situation. With this vision of Contextual Intelligence in mind, we are exploiting technologies from the Semantic Web for the mobile domain. For instance, to extend location-based services with knowledge and reasoning on places, people and things.

Matthias Wagner is a Senior Manager of the Smart and Secure Services Research Group at DOCOMO Euro-Labs, the European research laboratories of the leading Japanese mobile operator NTT DOCOMO. His research unit is concerned with service provisioning and contextual intelligence in the next generation of mobile systems. The group has created a distinct vision of the future mobile Internet with the Semantic Web as a key enabler, which is materialized in scientific publications as well as innovative research and pre-sale prototypes. Matthias Wagner held different positions within NTT DOCOMO R&D and acted in coordinating roles in pan-European and international research activities. While in the past ten years his work was tightly connected to the area of telecommunications, his professional roots are in the computer science domains of AI and database systems.

Tue 2.6.





KEYNOTES

Wed 3.6.

Wednesday, 3rd June • 09:00-10:30 | Conference Hall 1

Discovering and Building Semantic Models of Web Sources¹

Dr. Craig Knoblock | University of Southern California (US)

Session Chair: Paolo Traverso



To achieve widespread use of the Semantic Web depends on having a critical mass of Web data available with semantic annotations. Since there are a huge number of sources available today without any such annotations, the challenge is how to find and build semantic models for these sources. In this talk I will describe an integrated end-to-end approach that automatically discovers information-producing web sources, invokes and extracts the data from these sources, builds semantic models of the sources, and validates the results by comparing the data produced by the source with the model of the source. These techniques are implemented in a system called DEIMOS, which integrates a diverse set of technologies to completely automate this task. DEIMOS starts with a “seed” source and finds other similar sources online using data from a social networking web site. Next the system learns how to invoke these sources through experimentation and then extracts data from these sources with automatic wrapping techniques. Finally, DEIMOS learns a semantic model of a source, which identifies the semantic types of the data produced by a source as well as the function that maps the inputs to the outputs. I will describe the challenges in integrating the component technologies into a unified approach to discovering, extracting and modeling new online sources. I will also present an evaluation of the integrated system on three different domains to demonstrate that it can automatically discover and model new Web sources.

Craig Knoblock is a Senior Project Leader at the Information Sciences Institute and a Research Professor in Computer Science at the University of Southern California (USC). He is also the Chief Scientist for both Fetch Technologies and Geosemble Technologies, which are spinoff companies from USC. He received both his M.S. and Ph.D. in Computer Science from Carnegie Mellon and his B.S. from Syracuse University. His current research interests include information integration, information extraction, machine learning, users interfaces, constraint reasoning, geospatial data fusion, and bioinformatics.

He has published one book and over 150 articles, book chapters, and conference papers on his research. He has served on the Senior Program Committees of the National Artificial Intelligence Conference (1997, 1998, 2000, 2004, 2006, 2007), the International Joint Conference on AI (2007), the International Semantic Web Conference (2004, 2008), and the International Conference on Intelligent User Interfaces (2009). He was program co-chair



for the 2008 AAAI track on AI and the Web and he is conference chair for the 2011 International Joint Conference on AI (IJCAI). He is on the editorial board of AAAI Press, Computational Intelligence, and the Journal on Foundations and Trends in Web Science. He is a Fellow of the Association for the Advancement of Artificial Intelligence (AAAI), a Distinguished Scientist of the Association of Computing Machinery (ACM), a Trustee of the International Joint Conference on Artificial Intelligence (2007-2017), and past President of the International Conference on Automated Planning and Scheduling (2006-2008).

¹ This talk is based on joint work with Jose Luis Ambite, Mark Carman, Cenk Gazen, Kristina Lerman, Steven Minton, Anon Plangprasopchok, and Tom Russ. This research is based upon work supported in part by the National Science Foundation under award number IIS-0535182, in part by the Air Force Office of Scientific Research under grant number FA9550-07-1-0416, and in part by the Defense Advanced Research Projects Agency (DARPA) under Contract No. FA8750-07-D-0185/0004.

Wednesday, 3rd June • 20:00 | Conference Dinner | Main Pool

Tonight's dessert: Semantic Web Layer Cakes

Prof. Jim A. Hendler | Rennselaer (US)

Session Chair: Fabio Ciravegna

Tim Berners-Lee's „Semantic Web Layer Cake“ is one of the most used figures in our field. It has changed numerous times over the years, as new technologies have come along, and as the field has changed. Despite this, it appears to be incomplete - lots happening in the field is not included. In this talk, we take a look at the layer cake as it has changed over time and see what it can tell us about current and future Semantic Web work.

Jim Hendler is the Tetherless World Professor of Computer and Cognitive Science, and the Assistant Dean for Information Technology, at Rennselaer. He also serves as the Associate Director of the Web Science Research Initiative headquartered at MIT and is a visiting Professor at the Institute of Creative Technology at DeMontfort University in Leicester, UK. Hendler has authored about 200 technical papers in the areas of artificial intelligence, Semantic Web, agent-based computing and high performance processing. One of the inventors of the „Semantic Web,“ Hendler was the recipient of a 1995 Fulbright Foundation Fellowship and is a Fellow of the American Association for Artificial Intelligence and the British Computer Society. He is the Editor-in-Chief emeritus of IEEE Intelligent Systems and is the first computer scientist to serve on the Board of Reviewing Editors for Science.

Wed 3.6.





KEYNOTES

Thu 4.6.

Thursday, 4th June • 09:00-10:30 | Conference Hall 1

Video Semantics and the Sensor Web

Prof. Alan Smeaton | Dublin City University (IR)

Session Chair: Fabio Ciravegna



The most widespread way in which content-based access to video information is supported is through using a combination of video metadata (date, time, format, etc.) and user-generated description (user tags, ratings, reviews, etc.). This has had widespread usage and is the basis for navigation through video archives in systems such as YouTube, Open Video and the Internet Archive. However, there are limitations with this such as vocabulary issues, and authentication across the users who annotate content. Our work has concentrated on addressing content-based video retrieval, the kind of direct retrieval we routinely perform on text, retrieving web pages or blog posts based primarily on actual content.

One premise for our work is that we can extract descriptions of content reliably. We can easily extract low-level features such as colour, texture and shapes from the visual aspects of video (the picture) and from these we can compute visual similarity. In a video retrieval system this manifests as being able to find video shots based on the visual similarity between one or more query images and each of the keyframes in the video. Once again, however, this also has limits, such as having to locate query images to start the query, and the fact that a keyframe is just one moment of a video shot which may not be representative. More relevant to this talk is the challenge of automatically identifying semantic features from video and the talk will present a snapshot of the current approaches taken to identifying the presence or absence of groups of semantic features, in video. The annual TRECVID activity has been benchmarking the effectiveness of various approaches since 2001 and we will examine what is the performance of these detectors, what are the trends in this area, and what is the state of the art in this. We will discover that the performance of individual detectors varies widely depending on the nature of the semantic feature, the quality of training data and its dependence on other detectors. Current work addresses the inter-dependence among semantic features, supported by the use of ontologies, and also how the relatively poor quality of detection of these semantic features when taken in isolation, can be ameliorated by orchestrating them to work together. There is a strong analogy between this and the way that sensors (environmental, physiological, etc.) which make up the sensor web, can also have poor accuracy levels when used in isolation but whose individual performances can be improved when used in combination.



Alan Smeaton is Professor of Computing and Deputy Director of CLARITY: Centre for Sensor Web Technologies, at Dublin City University, Ireland. He leads a research group of over 40 full-time researchers, who work in the area of analysis, indexing, retrieval, summarisation and browsing of all kinds of multimedia information. He is the founding coordinator of TRECVID, the annual benchmarking activity in video analysis and retrieval which in the year 2008 had over seventy participating groups from across the globe. He has supervised over twenty PhD and research masters students to completion and currently supervises 8 PhD students.

He has published almost 300 research publications and is on the editorial board of 4 journals. He has brought in almost €13.5M in direct funding for his research over the last 20 years from sources including, EU, Irish research funding agencies, and directly from industry support. His current research is funded primarily by Science Foundation Ireland, in the area of managing the information streams which derive from networked sensors, commonly referred to as the sensor web.



RESEARCH PAPERS

Tue 2.6.

Tuesday, 2nd June • 11:00-13:00 | Conference Hall 1

Research I: Query Processing

Session Chair: Frank van Harmelen

Ranking Approximate Answers to Semantic Web Queries

Carlos Hurtado, Alexandra Poulouvasilis, Peter Wood

Tempus Fugit - Towards an Ontology Update Language

Uta Lösch, Sebastian Rudolph, Denny Vrandečić, Rudi Studer

Representing, Querying and Transforming Social Networks with RDF/SPARQL

Mauro San Martín, Claudio Gutierrez

Applied Temporal RDF: Efficient Temporal Querying of RDF Data with SPARQL

Jonas Tappelet, Abraham Bernstein

Tuesday, 2nd June • 11:00-13:00 | Conference Hall 2

Research II: Applications

Session Chair: Aldo Gangemi

Querying Trust in RDF Data with tSPARQL

Olaf Hartig

RadSem: Semantic Annotation and Retrieval for Medical Images

Manuel Moeller, Sven Regel, Michael Sintek

Semanta - Email Made Easy

Simon Scerri, Brian Davis, Siegfried Handschuh, Manfred Hauswirth

The Sile Model - A Semantic File System Infrastructure for the Desktop

Bernhard Schandl, Bernhard Haslhofer



Tuesday, 2nd June • 14:30-16:00 | Conference Hall 1

Research III: Semantic Web Services I

Session Chair: Philipp Cimiano

Mining Semantic Descriptions of Bioinformatics Web Services from the Literature

Hammad Afzal, Robert Stevens, Goran Nenadic

Hybrid Adaptive Web Service Selection with SAWSDL-MX and WSDL Analyzer

Matthias Klusch, Patrick Kapahnke, Ingo Zinnikus

Towards an Agent-based Approach for Verification of OWL-S Process Models

Monika Solanki

Tuesday, 2nd June • 14:30-16:00 | Conference Hall 2

Research IV: Ontologies and Natural Language

Session Chair: Asunción Gómez-Pérez

Towards Linguistically Grounded Ontologies

Paul Buitelaar, Philipp Cimiano, Peter Haase, Michael Sintek

Frame Detection over the Semantic Web

Bonaventura Coppola, Aldo Gangemi, Alfio Massimiliano Gliozzo, Davide Picca, Valentina Presutti

Word Sense Disambiguation for XML Structure Feature Generation

Andrea Tagarelli, Mario Longo, Sergio Greco

Tue 2.6.



RESEARCH PAPERS

Wed 3.6.

Wednesday, 3rd June • 11:00-13:00 | Conference Hall 1

Research V: Ontology Alignment

Session Chair: Jérôme Euzenat

Improving Ontology Matching using Meta-level Learning

Kai Eckert, Christian Meilicke, Heiner Stuckenschmidt

Ontology Integration Using Mappings: Towards Getting the Right Logical Consequences

Ernesto Jimenez Ruiz, Bernardo Cuenca Grau, Ian Horrocks, Rafael Berlanga

Using Partial Reference Alignments to Align Ontologies

Patrick Lambrix, Qiang Liu

Semantic Matching using the UMLS

Jetendr Shamdasani, Tamas Hauer, Peter Bloodsworth, Andrew Branson, Mohammed Odeh, Richard McClatchey

Wednesday, 3rd June • 11:00-13:00 | Conference Hall 2

Research VI: Semantic Web Architectures

Session Chair: Heiner Stuckenschmidt

Middleware for Automated Implementation of Security Protocols

Bela Genge, Piroska Haller

Can RDB2RDF Tools Feasibly Expose Large Science Archives for Data Integration?

Alasdair J. G. Gray, Norman Gray, Iadh Ounis

A Flexible API and Editor for SKOS

Simon Jupp, Sean Bechhofer, Robert Stevens

An Ontology of Resources: Solving the Identity Crisis

Harry Halpin, Valentina Presutti



Wednesday, 3rd June • 14:30-16:00 | Conference Hall 1

Research VII: Reasoning I

Session Chair: Chiara Ghidini

ReduCE: A Reduced Coulomb Energy Network Method for Approximate Classification

Nicola Fanizzi, Claudia d'Amato, Floriana Esposito

Hybrid Reasoning with Simple Forest Logic Programs

Cristina Feier, Stijn Heymans

A Tableau Algorithm for Handling Inconsistency in OWL

Xiaowang Zhang, Guohui Xiao, Zuoquan Lin

Wed 3.6.

Wednesday, 3rd June • 14:30-16:00 | Conference Hall 2

Research VIII: Ontology Engineering

Session Chair: Martin Hepp

Embedding Knowledge Patterns into OWL

Luigi Iannone, Alan Rector, Robert Stevens

A Core Ontology of Knowledge Acquisition

Josè Iria

ONTOCOM Revisited: Towards Accurate Cost Predictions for Ontology Development Projects

Elena Simperl, Igor Popov, Tobias Buerger



RESEARCH PAPERS

Wed 3.6.

Wednesday, 3rd June • 14:30-16:00 | Conference Hall 3

Research IX: Evaluation and Benchmarking

Session Chair: Manolis Koubarakis

Who the Heck is the Father of Bob?

Marko Luther, Thorsten Liebig, Sebastian Boehm, Olaf Noppens

Benchmarking Fulltext Search Performance of RDF Stores

Enrico Minack, Wolf Siberski, Wolfgang Nejdl

A Heuristics Framework for Semantic Subscription Processing

Martin Murth, Eva Kühn

Thu 4.6.

Thursday, 4th June • 11:00-12:00 | Conference Hall 1

Research X: Tagging and Annotation I

Session Chair: Harith Alani

Neighborhood-based Tag Prediction

Adriana Budura, Sebastian Michel, Philippe Cudrè-Mauroux, Karl Aberer

User Evaluation Study of a Tagging Approach to Semantic Mapping

Colm Conroy, Rob Brennan, Declan O'Sullivan, David Lewis



Thursday, 4th June • 12:00-13:00 | Conference Hall 1

Research XI: Semantic Web Services II

Session Chair: Matthias Klusch

Enhancing Service Selection by Semantic QoS

Henar Munoz, Ioannis Kotsiopoulos, Luis Miguel Vaquero Gonzalez, Luis Roderio Merino

Leveraging Semantic Web Service Descriptions for Validation by Automated Functional Testing

Ervin Ramollari, Dimitrios Kourtesis, Dimitris Dranidis, Anthony Simons

Thu 4.6.

Thursday, 4th June • 11:00-13:00 | Conference Hall 2

Research XII: Search and Identities

Session Chair: Eyal Oren

How to Trace and Revise Identities

Julien Gaugaz, Jakub Zakrzewski, Gianluca Demartini, Wolfgang Nejdl

Concept Search

Fausto Giunchiglia, Uladzimir Kharkevich, Ilya Zaihrayeu

Semantic Wiki Search

Peter Haase, Daniel Herzig, Mark Musen, Thanh Tran

Applying Semantic Social Graphs to Disambiguate Identity References

Matthew Rowe



RESEARCH PAPERS

Thu 4.6.

Thursday, 4th June • 14:30-16:00 | Conference Hall 1

Research XI: Reasoning II

Session Chair: Pascal Hitzler

SIM-DL_A: A Novel Semantic Similarity Measure for Description Logics Reducing Inter-Concept to Inter-Instance Similarity

Krzysztof Janowicz, Marc Wilkes

Decidability of SHI with Transitive Closure of Roles

Chan Le Duc

FO(ID) as an Extension of DL with Rules

Joost Vennekens, Marc Denecker

Thursday, 4th June • 14:30-16:00 | Conference Hall 2

Research XII: Tagging and Annotation II

Session Chair: Marta Sabou

Fuzzy Annotation of Web Data Tables using a Domain Ontology

Gaëlle Hignette, Patrice Buche, Juliette Dibia-Barthèlemy, Ollivier Haemmerlè

An Integrated Approach to Extracting Ontological Structures from Folksonomies

Huairan Lin, Joseph Davis, Ying Zhou

Reducing Ambiguity in Tagging Systems with Folksonomy Search Expansion

Jeff Z. Pan, Stuart Taylor, Edward Thomas

IN-USE TRACK PAPERS



Wednesday, 3rd June • 11:00-13:00 | Conference Hall 3

Wed 3.6.

In-Use I: Bringing Legacy Content to the Semantic Web

Session Chair: Eero Hyvönen

Creating Digital Resources from Legacy Documents - an Experience Report from the Biosystematics Domain

Guido Sautter, Klemens Böhm, Donat Agosti, Christiana Klingenberg

Collaborative Ocean Resource Interoperability - Multi-use of ocean data on the semantic web

Feng (Barry) Tao, Jon Campbell, Maureen Pagnani, Gwyn Griffiths

ONKI SKOS Server for Publishing and Utilizing SKOS Vocabularies and Ontologies as Services

Jouni Tuominen, Matias Frosterus, Kim Viljanen, Eero Hyvönen

Ontology Libraries for Production Use: Case Finnish Ontology Library Service ONKI

Kim Viljanen, Jouni Tuominen, Eero Hyvönen

Thursday, 4th June • 11:00-13:00 | Conference Hall 3

Thu 4.6.

In-Use II: Linked Data

Session Chair: Tom Heath

Media meets Semantic Web - How the BBC uses DBpedia and Linked Data to make Connections

Georgi Kobilarov, Tom Scott, Yves Raimond, Silver Oliver, Chris Sizemore, Michael Smethurst, Christian Bizer, Robert Lee

A Resource List Management Tool for Undergraduate Students based on Linked Open Data Principles

Chris Clarke

Ontology-based Service Discovery Front-end Interface for GloServ

Knarig Arabshian, Christian Dickmann, Henning Schulzrinne

SCOVO: Using Statistics on the Web of Data

Michael Hausenblas, Wolfgang Halb, Yves Raimond, Lee Feigenbaum, Danny Ayers



DEMONSTRATIONS

Tue 2.6.

Tuesday, 2nd June • 11:00-13:00 | Conference Hall 3

Demo Papers I

Session Chair: Elena Simperl, Philip Cimiano

SAscha: Supporting the Italian Public Cooperation System with a Rich Internet Application for Semantic Web Services

Alessandro Adamou

Folksonomy Enrichment and Search

Sofia Angeletou, Marta Sabou, Enrico Motta

K-Tools: Towards Semantic Knowledge Management

Sam Chapman, Vitaveska Lanfranchi, Ravish Bhagdev

The XMediaBox: Sensemaking through the Use of Knowledge Lenses

Aba-Sah Dadzie, Jose Iria, Daniela Petrelli, Lei Xia

Controlled Natural Language for Semantic Annotation

Brian Davis, Pradeep Varma, Laura Dragan, Siegfried Handschuh, Hamish Cunningham

Multilingual and Localization Support for Ontologies

Mauricio Espinoza, Asunción Goómez-Pérez, Elena Montiel-Ponsoda

WSMX 1.0: A Further Step Toward a Complete Semantic Execution Environment

Federico Michele Facca, Srdjan Komazec, Ioan Toma

MoKi: The Enterprise Modelling Wiki

Chiara Ghidini, Barbara Kump, Stefanie Lindstaedt, Nahid Mahbub, Viktoria Pammer, Marco Rospocher, Luciano Serafini

The Personal Knowledge Workbench of the NEPOMUK Semantic Desktop

Gunnar Aastrand Grimnes, Leo Sauermann, Ansgar Bernardi

Utilizing Semantics in the Production of iTV Shows

Georg Güntner, Dietmar Glachs, Rupert Westenthaler



Knowledge Applications for Life Events

Ronald Heller, Freek van Teeseling

CultureSampo – A National Publication System of Cultural Heritage on the Semantic Web 2.0

Eero Hyvönen, Eetu Mäkelä, Tomi Kauppinen, Olli Alm, Jussi Kurki, Tuukka Ruotsalo, Katri Seppälä, Joeli Takala, Kimmo Puputti, Heini Kuittinen, Kim Viljanen, Jouni Tuominen, Tuomas Palonen, Matias Frosterus, Reetta Sinkkilä, Panu Paakkari, Joonas Laitio, Katariina Nyberg

A Rule System for Querying Persistent RDFS Data

Giovambattista Ianni, Thomas Krennwallner, Alessandra Martello, Axel Polleres

Tuesday, 2nd June • 14:30-16:00 | Conference Hall 3

Tue 2.6.

Demo Papers II

Session Chair: Elena Simperl

RaDON – Repair and Diagnosis in Ontology Networks

Qiu Ji, Peter Haase, Guilin Qi, Pascal Hitzler, Steffen Stadtmueller

Supporting the Reuse of Global Unique Identifiers for Individuals in OWL/RDF Knowledge Bases

Xin Liu, Heiko Stoermer, Paolo Bouquet, Shu Wang

Modeling and Enforcement of Business Policies on Process Models with Maestro

Ivan Markovic, Suresh Jain, Mahmoud El-Gayyar, Armin B. Cremers, Nenad Stojanovic

A Reasoning-Based Support Tool for Ontology Mapping Evaluation

Christian Meilicke, Heiner Stuckenschmidt, Ondrej Svab-Zamazal

Semanta – Semantic Email in Action

Simon Scerri, Ioana Giurgiu, Brian Davis, Siegfried Handschuh

KiWi – A Platform for Semantic Social Software

Sebastian Schaffert, Julia Eder, Szaby Grünwald, Thomas Kurz, Mihai Radulescu



DEMONSTRATIONS

Pattern-based Annotation of HTML streams

Florian Schmedding, Max Schwaibold, Kai Simon

OntoCompP: A Protégé Plugin for Completing OWL Ontologies

Baris Sertkaya

HistoryViz – Visualizing events and relations extracted from Wikipedia

Ruben Sipos, Abhijit Bhole, Blaz Fortuna, Marko Grobelnik, Dunja Mladenic

Ontology Evolution with Evolva

Fouad Zablith, Marta Sabou, Mathieu d'Aquin, Enrico Motta

Cupboard – A Place to Expose your Ontologies to Applications and the Community

Mathieu d'Aquin, Holger Lewen

TUTORIALS



Tutorial 1 | Room Clio | **Sunday, 31st May • 09:00-18:00**

Semantic Web Services and their role within Enterprise Processes and a Service Web (Full Day)

John Domingue, Jacek Kopecky, Carlos Pedrinaci, Elena Simperl and Agata Filipowska

Tutorial 2 | Room Ourania | **Sunday, 31st May • 09:00-18:00**

The Web of Data for E-Commerce in One Day: A Hands-on Introduction to the GoodRelations Ontology, RDFa, and Yahoo! SearchMonkey (Full Day)

Martin Hepp and Michael Hausenblas

Tutorial 3 | Room Efterpi | **Sunday, 31st May • 09:00-18:00**

Extreme Design (XD): Pattern-based Ontology Design (Full Day)

Valentina Presutti, Aldo Gangemi, Eva Blomqvist, Francois Sharffe and Vojtech Svatek

Tutorial 4 | Room Thalia | **Sunday, 31st May • 09:00-13:00**

Semantic technologies for data integration using OWL2 QL

Domenico Lembo, Maurizio Lenzerini, Riccardo Rosati

Tutorial 5 | Room Thalia | **Sunday, 31st May • 14:30-18:00**

OWL 2 Rules

Pascal Hitzler, Markus Kroetzsch and Sebastian Rudolph

Tutorial 6 | Room Melpo | **Sunday, 31st May • 09:00-13:00**

Evaluation of Semantic Web Technologies

Ulrich Küster, Raúl García Castro, Jérôme Euzenat and Christian Bizer

Sun 31.5.



WORKSHOPS

Sun 31.5.

Workshop 7 | Conference Hall 1 | **Sunday, 31st May • 09:00-18:00**
5th Workshop on Scripting and Development for the Semantic Web (SFSW2009)

Workshop 8 | Room Melpo | **Sunday, 31st May • 14:30-18:00**
1st International Workshop on Stream Reasoning (SR2009)

Mon 1.6.

Workshop 1 | Room Clio | **Monday, 1st June • 09:00-18:00**
1st International Workshop on the Semantic Sensor Web (SemSensWeb 2009)

Workshop 2 | Room Efterpi | **Monday, 1st June • 09:00-18:00**
Trust and Privacy on the Social and Semantic Web (SPOT2009)

Workshop 3 | Room Thalia | **Monday, 1st June • 09:00-18:00**
4th Workshop on Semantic Wikis (SemWiki2009)

Workshop 4 | Room Melpo | **Monday, 1st June • 09:00-18:00**
Workshop on Inductive Reasoning and Machine Learning on the Semantic Web (IRMLeS2009)

Workshop 5 | Room Kalia | **Monday, 1st June • 09:00-18:00**
4th International Workshop on Semantic Business Process Management (SBPM2009)

Workshop 6 | Room Erato | **Monday, 1st June • 09:00-18:00**
Workshop on Context, Information and Ontologies (CIAO2009)

CONFERENCE EVENTS



Monday, 1st June • 09:00-18:00 | Room Polymnia

PhD Symposium

sponsored by Project NeOn

Mon 1.6.

Tuesday, 2nd June • 16:30-18:00 | Conference Hall 1

Panel Session

Panel: Science 2.0: What do we have to offer to its development?

Session Chair: Fausto Giunchiglia

Tue 2.6.

Tuesday, 2nd June • 19:30-22:00 | Club Aquarius

Poster and Demo Session

Wednesday, 3rd June • 16:30-18:00 | Conference Hall 1

Lightening Talks

Session Chair: Michael Hausenblas

Wed 3.6.

Thursday, 4th June • 14:30-16:00 | Conference Hall 3

Workshop Summary

Session Chair: Valentina Pressuti

Thu 4.6.



EU AND SPONSORING EVENTS

Mon 1.6.

Monday, 1st June • 19:00-20:00 | Sea Platform

LarKC Reception

Monday, 1st June • 09:00-18:00 | Room Ourania

LarKC Workshop

Tue 2.6.

Tuesday, 2nd June • 18:00-19:30 | Conference Hall 1

The 1st EU ,Matchmaking’ Event: Creating opportunities for the future

Wed 3.6.

Wednesday, 3rd June • 18:00-19:00 | Conference Hall 1

EU Call 5 Information Session



Diamond Sponsors

SOA4All

<http://www.soa4all.eu/>

SOA4All will help to realize a world where billions of parties are exposing and consuming services via advanced Web technology. We will provide a comprehensive framework and infrastructure that integrates four complimentary and revolutionary technical advances into a coherent and domain independent service delivery platform:

- Web principles and technology as the underlying infrastructure for the integration of services at a world wide scale.
- Web 2.0 as a means to structure human-machine cooperation in an efficient and cost-effective manner.
- Semantic Web technology as a means to abstract from syntax to semantics as required for meaningful service discovery.
- Context management as a way to process in a machine understandable way user needs that facilitates the customization of existing services for the needs of users.



SUPER - Semantic Utilised for Process Management within and between Enterprises

<http://www.ip-super.org/>

The major objective of SUPER is to raise Business Process Management (BPM) to the business level, where it belongs, from the IT level where it mostly resides now. This objective requires that BPM is accessible at the level of semantics of business experts.



Video Lecturing Sponsor

ACTIVE

<http://www.active-project.eu>

Europe is in transition to a knowledge economy. Effective knowledge management is fundamental to successful economic activity, yet enterprises find it hard to transform much of their essential knowledge into transferable, easily accessible, and actionable knowledge assets. Such hidden knowledge is typically held by individual knowledge workers, being either tacit (unarticulated) or explicit but not widely available (e.g. emails, personal desktop files).

ACTIVE aims to increase the productivity of knowledge workers in a pro-active, contextualised, yet easy and





SPONSORS

unobtrusive way. ACTIVE will integrate concepts, methods and tools from the fields of (i) Social Software and Web 2.0, (ii) Semantic Technologies, (iii) Context Mining, Context Modelling, and Context Sensitive Task Management, and (iv) Knowledge Process Mining, Knowledge Process Modelling and Pro-Active Knowledge Process Support into highly innovative application systems. The key result of ACTIVE will be a breakthrough which empowers enterprises to make knowledge technology effective for a much larger share of their essential knowledge. ACTIVE will generate sustainable impact by deploying the tools and applications in three industry sectors: consulting, telecommunication and engineering („ACTIVE technology“).

PhD Symposium Sponsor

NeOn

<http://www.neon-project.org>



The aim of NeOn is to create the first ever service-oriented, open infrastructure, and associated methodology, to support the development life-cycle of such a new generation of semantic applications, with the overall goal of extending the state of the art with economically viable solutions. These applications will rely on a network of contextualized ontologies, exhibiting local but not necessarily global consistency.

Platinum Internet Sponsor

LarKC

<http://www.larkc.eu/>



The aim of the EU FP 7 Large-Scale Integrating Project LarKC is to develop the Large Knowledge Collider (LarKC, for short, pronounced “lark”), a platform for massive distributed incomplete reasoning that will remove the scalability barriers of currently existing reasoning systems for the Semantic Web.



Platinum Sponsor

Ontotext

<http://www.ontotext.com/index.html>

Ontotext is the developer of several outstanding products and major contributor to open-source platforms. It is a proven, competent and cost-effective, partner in:

- Development of tools and solutions based on semantic technologies
- Software engineering, performance optimization, ontology design
- Analysis, evaluation, feasibility studies based on cutting-edge expertise

The technology delivers real-world applications in Web Services and Enterprise Application Integration, Knowledge Management and Textmining, Business Intelligence, Media Research, and Life sciences. Ontotext carries out research in: NLP, information retrieval, ontology design and management, knowledge representation and reasoning, semantic web services and business process management (BPM). It is taking part in research projects with total budget of more than 100 million EURO. As a member of W3C we are involved in the development of the vision and the standards powering the development of the web.



USB-stick Sponsor

NoTube

<http://www.notube.org>

NoTube is the first project to focus on TV content as a medium for personalized interaction. The overall result of this project will be twofold:

- Architecture, Services and Models for Personalized Access of TV Content
- Three showcase implementations that demonstrate the use of this architecture to realize challenging use cases with different combinations of NoTube services and models.





SPONSORS

Gold Sponsor

Yahoo! Research

<http://research.yahoo.com>



The mission of Yahoo! Research is to develop the world-class science that will deliver the next generation of businesses to the company.

The scientists focus on data-driven analysis, high-quality search, algorithms and economic models. Yahoo! manages many of the largest and richest data repositories in the world, and researchers mine insights from these giant collections, individually and collectively, maintaining the privacy of the users while setting new standards for user value.

Yahoo! believes in an open culture of collaboration with peers from academic and research institutions. Yahoo! provides an academic setting with a focus on simultaneously publishing scientific work of the highest standard while driving a research agenda with significant impact on the company. At the same time, they follow the Yahoo! tradition of a great work environment with first-rate benefits and amenities, the freedom to exercise creativity in pursuit of a goal, and a fun, focused setting with world-class colleagues.

Silver Sponsor

IOS Press

<http://www.iospress.nl/>



IOS Press publishes some 85 international journals, ranging from computer science and mathematics to medicine and the natural sciences and 100-125 book titles a year. Commencing its publishing activities in 1987, IOS Press services a variety of scientific and medical communities in all parts of the world. IOS Press is a fast growing publishing company, which follows the developments in publishing closely. All journals are available online and an online book platform has been launched.

MUSING

<http://musing.eu/>



MUSING delivers next-generation knowledge management solutions and services to enable perceptive business intelligence activities, directly at the End-Users premises. By applying innovative technological solutions, MUSING provides exclusive services for three business intelligence application areas: Financial Risk Management, Internationalisation and IT-Operational Risk & Business Continuity.



Talis

<http://www.talis.com/>

The Talis Platform is an open technology platform for mass collaboration and human-centric and information-rich applications. A platform for semantic applications, it combines Semantic Web, information retrieval, collective intelligence and behavioral mining technologies. Provides data management, organization and analysis components that can learn and understand patterns of behavior and present them through an API to be interwoven appropriately into any application. Interaction with the Talis Platform is via a suite of RESTful Web services.



Saltlux

<http://www.saltlux.com>

Being established in 1979 and renovated in 2003, Saltlux Inc. is the true value innovation partner that supplies complete, integrated services and total solutions based on next generation information retrieval, mining and semantic technologies. Saltlux is actively working in 3 main businesses in ubiquitous computing, intelligent web based on semantic technologies and search 2.0 with [IN2]Platform which is service-oriented intelligent search platform using semantics and mining.



Social Experiment Sponsor

TAGora

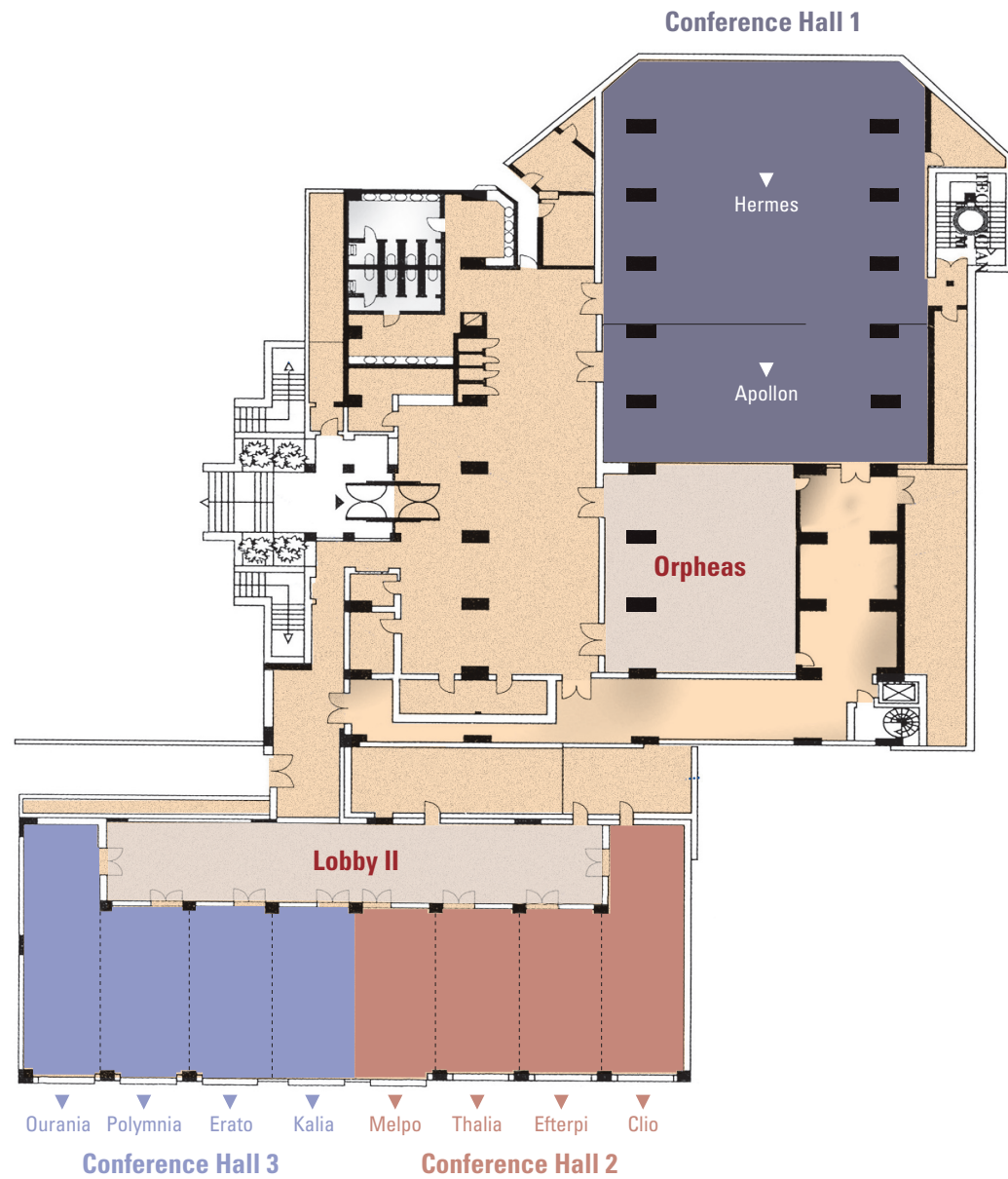
<http://www.tagora-project.eu/>

The TAGora project aims at exploiting the unique opportunities offered by the increasing popularity of computer-mediated social interaction in a variety of contexts. Such popularity, in fact, is making available large amounts of raw data from online semiotic systems (for example, collaborative tagging systems) and these data may become the foundation of a true scientific investigation about the behavior of human agents on the Web and the dynamics of information in online communities.





CONFERENCE VENUE





Aldemar Knossos Royal Village
 Limenas Hersonissou,
 700 14, Crete, Greece
 Tel. +30 28970 27 400

General

1. Main Entrance
2. Main Building
3. Reception
4. Main Pool A
5. Waterfall - Waterslide
6. Main Pool B
7. Children's Pool

Restaurants & Bars

8. Main Restaurant
9. Self Service /
Snack Bar & Restaurant
10. Mini Restaurant
11. Beach Bar & Restaurant
12. Taverna „Artemis“
13. Gourmet Restaurant
„Fontana Amorosa“
14. Ouzeri
15. Villas Restaurant
16. Main Bar
17. Pool Bar
18. Wine Bar „Cellar“
19. Night Club „Aquarius“

Sports & Recreation Facilities

20. Beach
21. Watersports Centre - Diving Center
22. Tennis Courts
23. Mini Golf
24. Fitness Center, Sauna
25. Indoor Pool
26. Amphitheatre
27. Mini Club
28. Children's Facilities

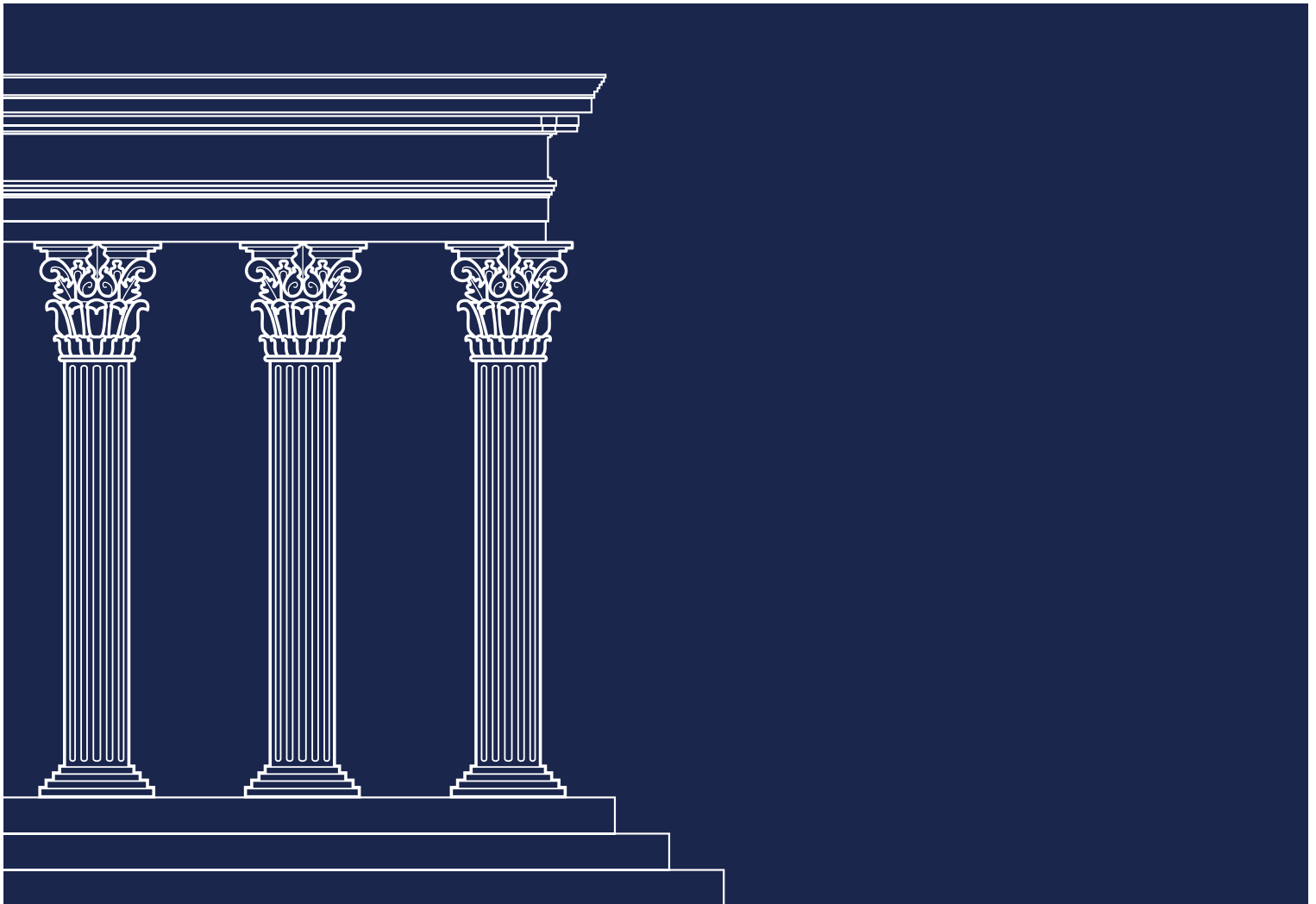
Various

29. Conference Centre
30. Cretan Art Shops
31. Aldemar Shop, Shopping Arcade,
Jewellery, Boutique, Coiffure
32. Mini Market
33. Bridge Room
34. Games Room
35. Internet Corner
36. TV-DVD Room
37. Church
38. Parking
39. Platforms

Brought to you by:



STI · INTERNATIONAL



Semantic Technology Institute International | Amerlingstraße 19/35 | A-1060 Vienna | p: +43 1 23 64 002 | f: +43 1 23 64 002-99 | e: office@sti2.org | w: www.sti2.org